



KIA Genuine Accessories

Vehicle Model Sorento
 Model Year 2012
 KMA Part No. U8610 1U002

Accessory Tow Hitch Kit
 Difficulty (B) - (C)

Note: Difficulty stated above reflects the minimum level of expertise required to install the accessory
 (A) Customer (B) Dealer Technician (C) Master Technician

* Install Electrical Harness Before Installing Hitch*

- Accessory Installation

Instructional Symbols / Definitions

	Denotes warnings that may lead to serious physical injury or vehicle damage.		Denotes quality processes to be checked prior to moving to the next step.	Denotes safety equipment required to be used such as a mask, goggles, rubber gloves, and hearing protection.	
	Denotes cautions to be taken to avoid physical injury or electronic component damage.		Denotes specific tools that are necessary to complete the step.		
	Denotes cautions to be taken to avoid vehicle and component damage.	NOTE	Denotes instructional steps necessary to complete the process.		
				Mask	Goggles
				Rubber Gloves	Hearing Protection

Basic Required Hand Tools

Ratchet	6" Extension	10,17 & 19 mm Socket	Torque Wrench	19 mm Crowfoot Wrench

Specialty Required Tools:

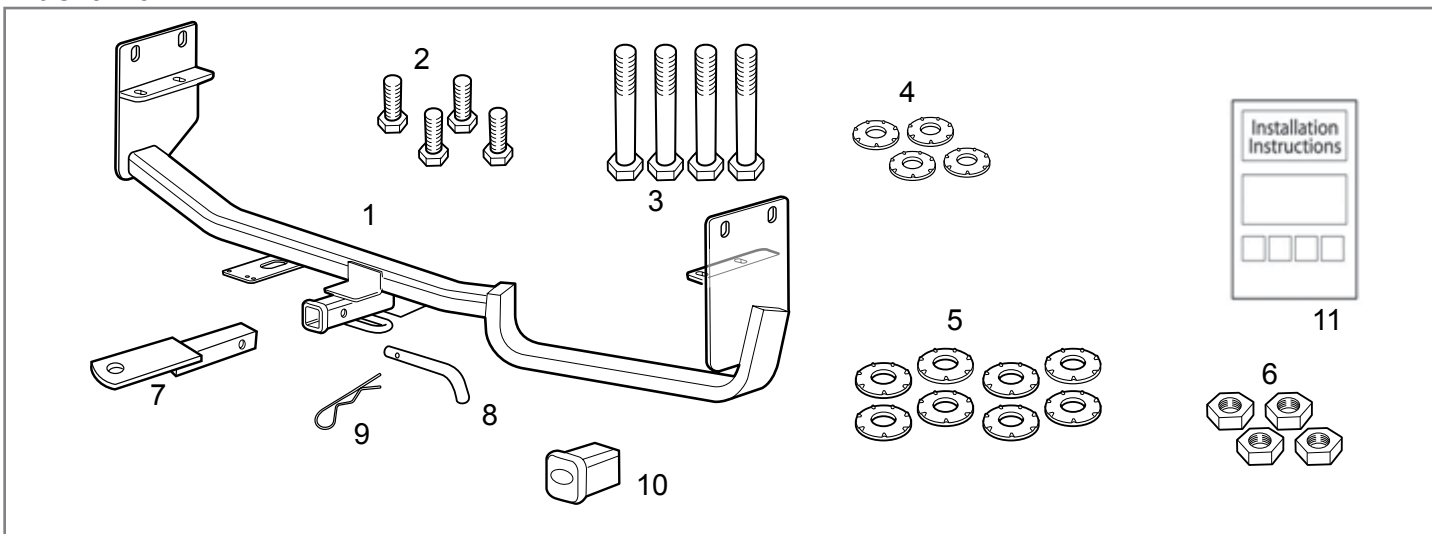
M10 x 1.25 Thread Chaser

Exhaust Hanger Removal Tool
 Available from Lisle Corp,
 Snap-On, Cornwell

Shop Cloths

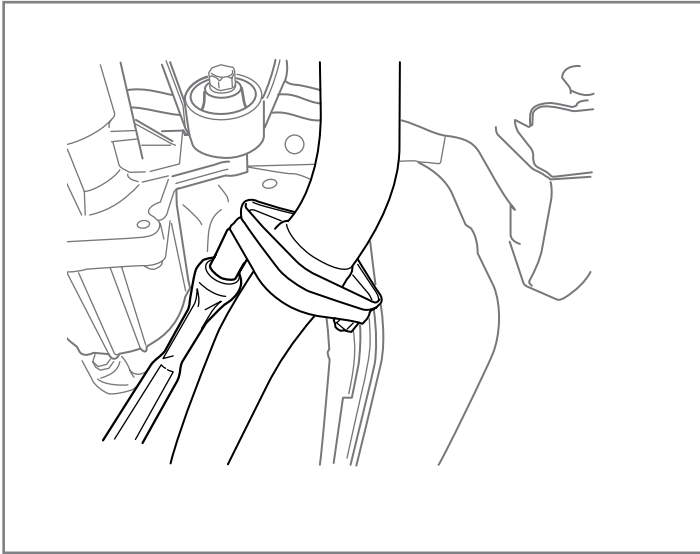
Vehicle Lift

Kit Overview

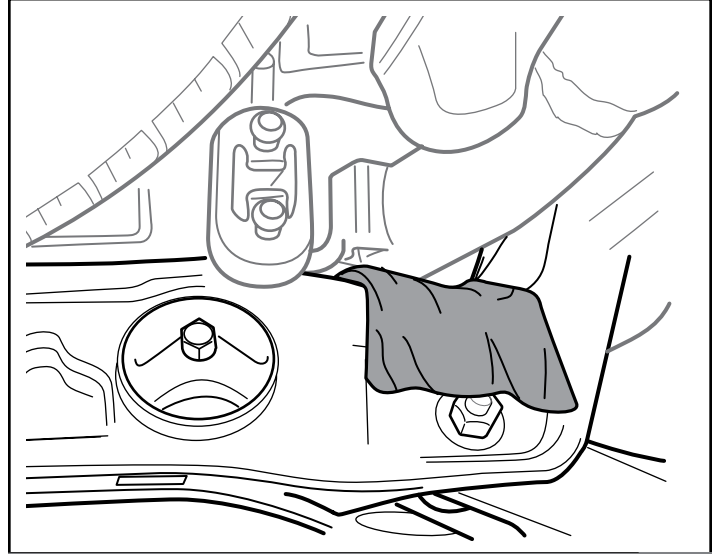


No.	Qty.	Description
1	1	Hitch
2	4	M10 X 1.25 X 30 Grade 10.9 Bolts
3	4	M12 X 1.75 X 110 Grade 10.9 Bolts
4	4	Washer, Conical M10
5	8	Washer, Conical M12
6	4	Nut, M12 X 1.75 CL10
7	1	Ball Mount
8	1	Pin
9	1	Clip
10	1	Receiver Plug
11	1	Installation Instructions

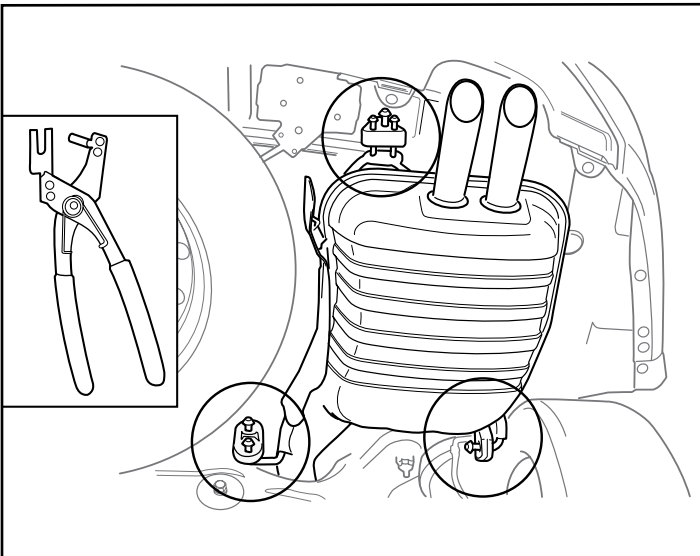
KIA Genuine Accessories



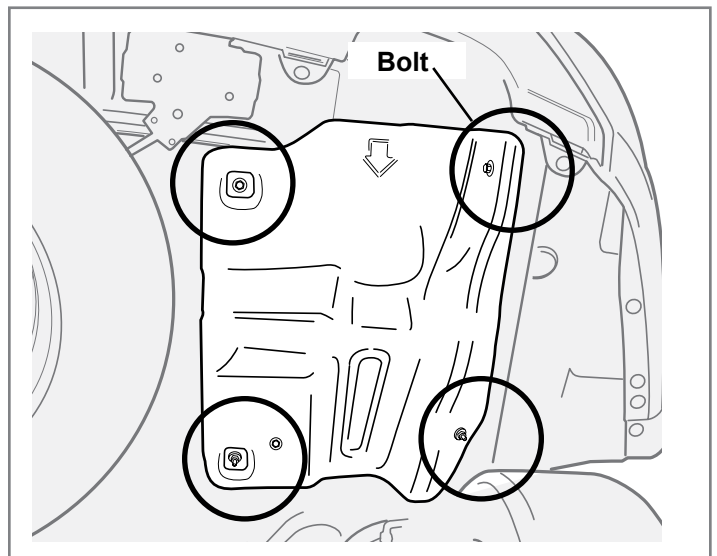
	Ratchet, 19mm Socket	1
NOTE	OPTIONAL STEP - Loosen the two (2) exhaust flange nuts to aid in lowering the muffler. Do not remove.	
	Make sure the exhaust pipe is cold.	



	Shop Cloth	2
NOTE	Place a cloth over the vehicle cross member, as shown, to protect from scratching.	
	Make sure the muffler and exhaust tips are cold.	

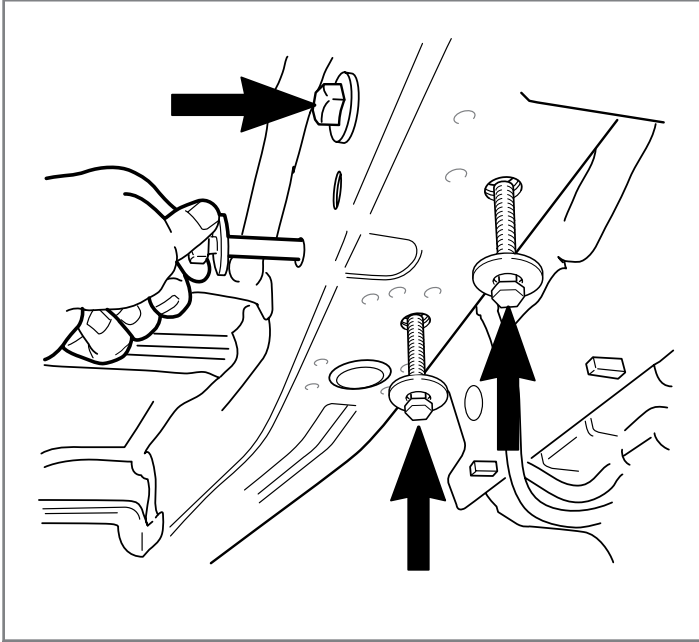


	Exhaust Hanger Removal Tool	3
NOTE	Using the Exhaust Hanger Removal Tool, dislodge the exhaust hanger from the rubber holder at all three (3) locations, as shown. This will allow you to lower the muffler enough to gain access to the heat shield.	
	Make sure the muffler and exhaust tips are cold.	



	Ratchet, 10mm Socket	4
NOTE	To lower the heat shield on the passenger side, remove the three (3) M6 nuts and one (1) M6 bolt in the four (4) locations as shown. Set the shield on top of the muffler. You can now access the upper hitch mounting holes.	
	Make sure the muffler and exhaust tips are cold.	

KIA Genuine Accessories

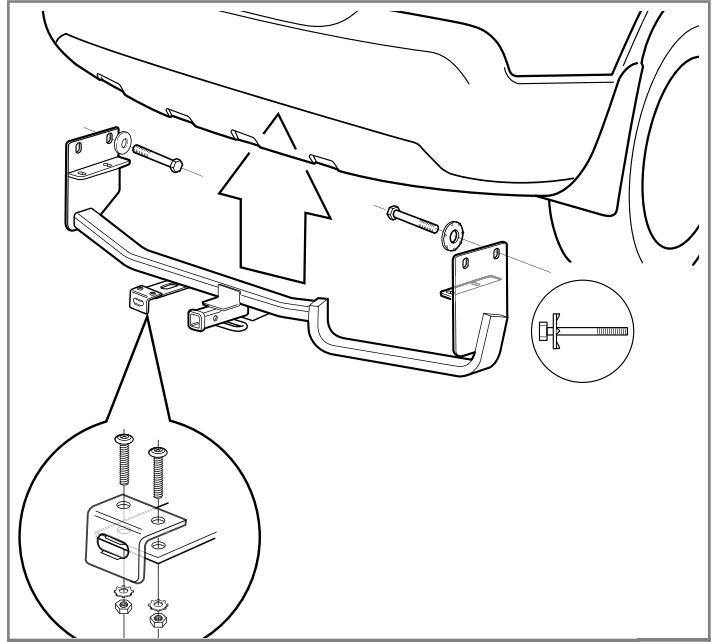


M10 X 1.25 Thread Chaser

5

NOTE

Before installing the hitch, make sure all four (4) M12 bolts fit through the frame section completely. Also, hand tighten the four (4) M10 bolts into ALL four (4) mounting holes to confirm there is no debris or weld spatter on the chassis rail weld nuts. If a bolt does not thread properly through the weld nut, stop and inform the shop supervisor immediately. Use a M10 x 1.25 thread chaser to clean out the weld nuts.



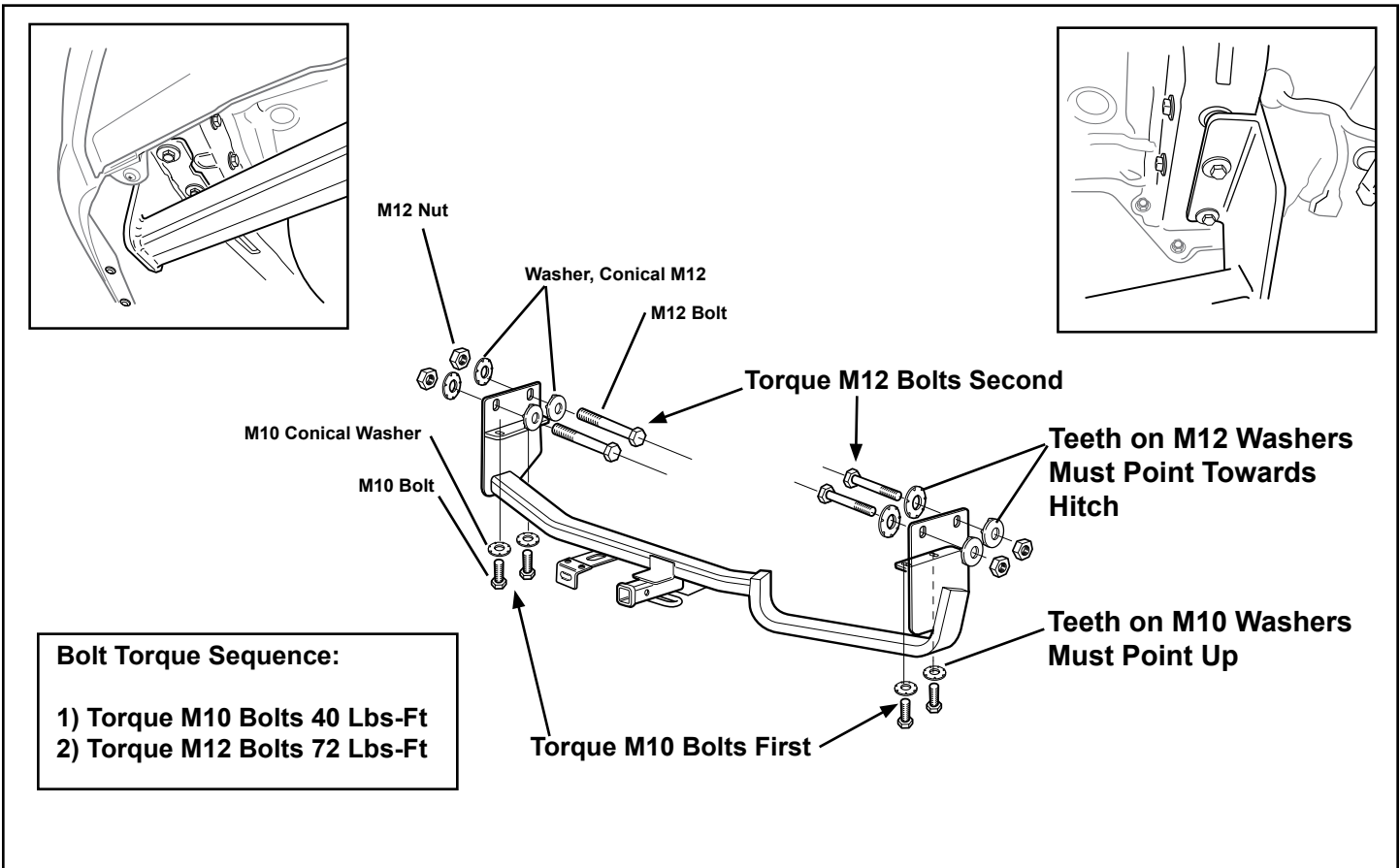
6

NOTE

Make sure the 4-way flat electrical harness bracket is bolted onto the hitch per the Electrical Harness Installation Instructions before mounting the hitch to the vehicle. Preassemble the M12 bolts with the M12 Conical Washers as shown. Offer up the hitch evenly over the chassis rails and insert one (1) M12 bolt and washer assembly on each side of the vehicle. Bolts must be inserted on the inside of the chassis rail as shown and pass completely through the other side. This will hold the hitch in position for the next step.



KIA Genuine Accessories



Ratchet, Extension, 10,17 & 19mm Sockets, 19mm Crowfoot, Torque Wrench, Permanent Yellow or White Marker

7

NOTE

- Starting on the Driver Side of the vehicle, position the hitch so the holes in the lower hitch brackets align with the weld nuts in the vehicle. Hand tighten a M10 bolt and M10 Conical washer in each location. **Do not use power tools.**
- CAUTION – Do not cross thread the bolts. Be sure the “tooth” side of the washer installs up against the hitch mounting brackets, as shown above. This is critical to ensure bolts do not loosen.**
- Insert the remaining two (2) M12 bolts assembly through the last holes. Secure the M12 bolts on the outside of the chassis rail with one (1) M12 Conical Washer and one (1) M12 Nut as shown. Repeat this procedure for the Passenger side of the vehicle. Do not torque these M12 bolts yet.
- Torque the four (4) M10 bolts to 40 Lbs-Ft and then torque the four (4) M12 Bolts to 72 Lbs-Ft using a 19mm Crowfoot and Torque wrench on the outside of the chassis rails. Use a permanent yellow or white marker to mark a line on top of each bolt head.
- Replace the heat shield to its original position, as noted in Step 4 and reinstall the M6 hardware. Tighten the M6 fasteners securely, do not over tighten. (Torque the two (2) exhaust flange nuts to 43 Lbs.-Ft if step 1 was performed). Reattach the three (3) rubber hangers to the exhaust system.
- Insert the rubber plug into the receiver hitch box and place the ball mount kit into the storage compartment in trunk of vehicle.
- Refer to the Electrical Harness Installation Sheet to complete the harness installation.



Make sure the muffler and exhaust tips are cold.
Make sure the washers are properly installed on the bolts as shown above and that both the M10 and M12 bolts are properly torqued to the above specifications.